



## **APPENDIX 4-2**

**SITE LAYOUT PLANNING  
DRAWINGS**



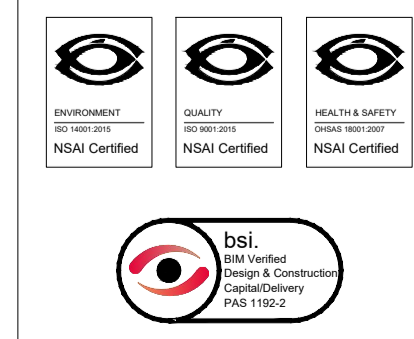
**COORDINATES**  
 IRISH GRID COORDINATES: E= 294505, N= 238847  
 ITM COORDINATES: E= 694436, N= 738873

**PLANNING DRAWING.**  
 NOT FOR CONSTRUCTION.  
 ALL LEVELS GIVEN ARE  
 RELATIVE TO ORDNANCE DATUM.  
 THIS DRAWING HAS BEEN ISSUED FOR INFORMATION  
 PURPOSES ONLY AND MUST NOT BE USED  
 FOR CONSTRUCTION UNDER ANY CIRCUMSTANCES

ORDNANCE SURVEY OF IRELAND LICENCE NO. EN0000821 © GOVERNMENT OF IRELAND

- FOR SETTING OUT REFER TO ARCHITECT'S DRAWINGS.
- THIS DRAWING TO BE READ IN CONJUNCTION WITH ALL OTHER ARCHITECTURAL AND ENGINEERING DRAWINGS AND ALL OTHER RELEVANT DRAWINGS AND SPECIFICATIONS.
- DO NOT SCALE THIS DRAWING. USE FIGURED DIMENSIONS ONLY.
- NO PART OF THIS DOCUMENT MAY BE REPRODUCED OR TRANSMITTED IN ANY FORM OR STORED IN ANY RETRIEVAL SYSTEM OF ANY NATURE WITHOUT THE WRITTEN PERMISSION OF O'CONNOR SUTTON CRONIN AS COPYRIGHT HOLDER EXCEPT AS AGREED FOR USE ON THE PROJECT FOR WHICH THE DOCUMENT WAS ORIGINALLY ISSUED.

Rev No.	Date	Revision Note	Drn by	Chkd by	Rev No.	Date	Revision Note	Drn by	Chkd by
P01	09/12/21	SUITABLE FOR INFORMATION	RM	SMG					
P02	30/03/22	FOR INFORMATION	RM	MK					
P03	07/06/22	FOR PLANNING	RM	WM					
P04	27/07/22	FOR PLANNING	RM	WM					
P05	25/08/22	FOR PLANNING	JC	WM					



Head Office,  
 9 Prussia Street,  
 Dublin 7.  
 D07 KT57



TEL +353 (0)1 8682000

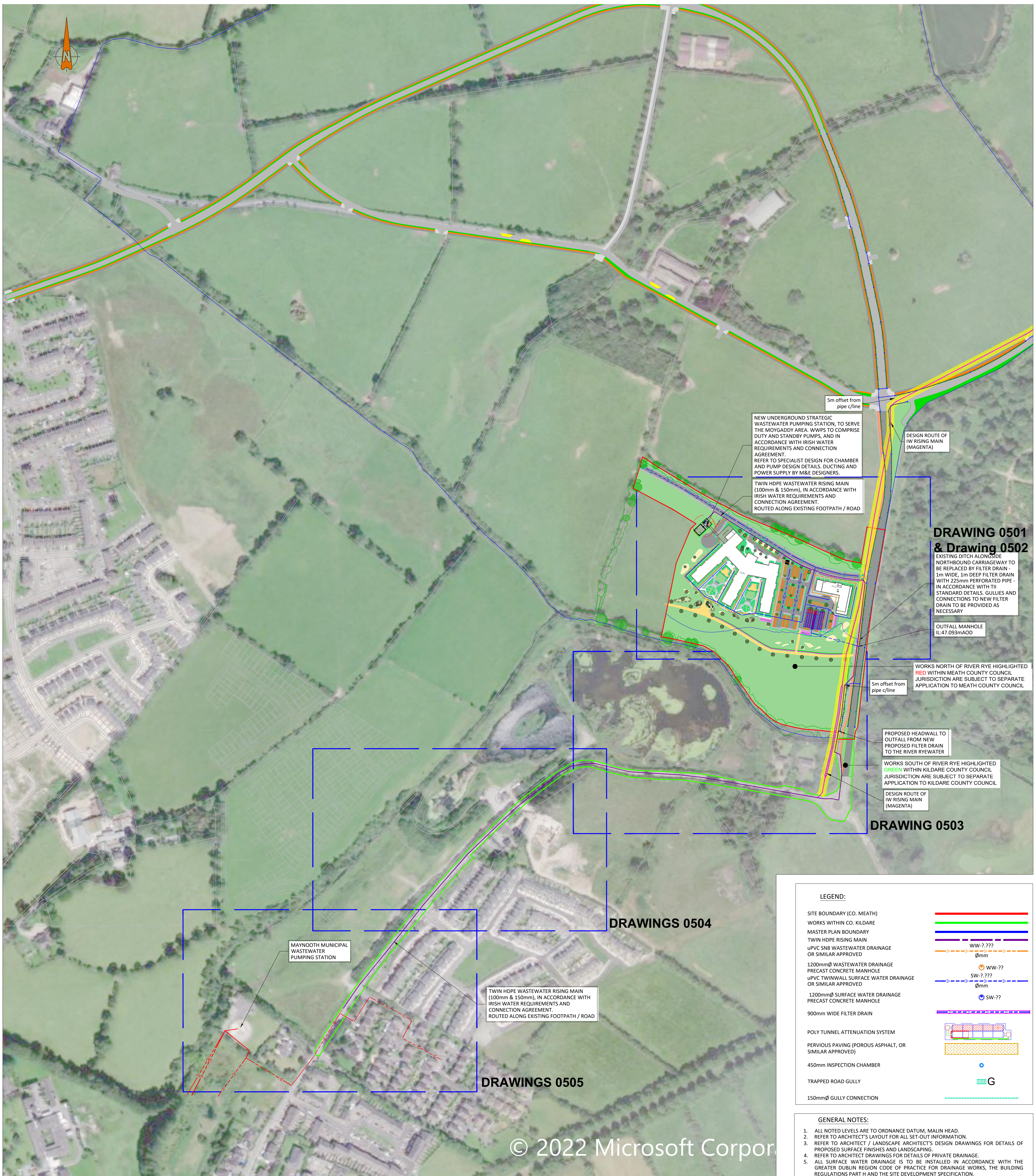
e: [contactus@ocsc.ie](mailto:contactus@ocsc.ie)  
 w: [www.ocsc.ie](http://www.ocsc.ie)

Dublin | London | Belfast | Galway | Cork | Birmingham

Client: SKY CASTLE LTD  
 Project: PRIMARY CARE CENTRE & NURSING HOME

Title: SITE LOCATION

Code | Originator | Zone | Level | Type | Role | Number | Status | Revision  
 S665 | OCSC | 1B | MH | DR | C | 0100 | S4 | P05  
 Date: NOV '21 Scale: 1:1000@ A1 Drn by:RM Chkd by:MK Aprvd by:MK



**DRAWING 0501 & Drawing 0502**

NEW UNDERGROUND STRATEGIC WASTEWATER PUMPING STATION, TO SERVE THE MOYGADDY AREA. WWP'S TO COMPRISE DUTY AND STANDBY PUMPS, AND IN ACCORDANCE WITH IRISH WATER REQUIREMENTS AND CONNECTION AGREEMENT. REFER TO SPECIALIST DESIGN FOR CHAMBER AND PUMP DESIGN DETAILS. DUCTING AND POWER SUPPLY BY M&E DESIGNERS.

TWIN HDPE WASTEWATER RISING MAIN (100mm & 150mm), IN ACCORDANCE WITH IRISH WATER REQUIREMENTS AND CONNECTION AGREEMENT. ROUTED ALONG EXISTING FOOTPATH / ROAD

5m offset from pipe c/line

DESIGN ROUTE OF IW RISING MAIN (MAGENTA)

EXISTING DITCH ALONGSIDE NORTHBOUND CARRIAGEWAY TO BE REPLACED BY FILTER DRAIN - 1m WIDE, 1m DEEP FILTER DRAIN WITH 225mm PERFORATED PIPE - IN ACCORDANCE WITH TII STANDARD DETAILS. GULLIES AND CONNECTIONS TO NEW FILTER DRAIN TO BE PROVIDED AS NECESSARY

OUTFALL MANHOLE IL:47.093mAOD

WORKS NORTH OF RIVER RYE HIGHLIGHTED RED WITHIN MEATH COUNTY COUNCIL JURISDICTION ARE SUBJECT TO SEPARATE APPLICATION TO MEATH COUNTY COUNCIL

5m offset from pipe c/line

PROPOSED HEADWALL TO OUTFALL FROM NEW PROPOSED FILTER DRAIN TO THE RIVER RYEWATER

WORKS SOUTH OF RIVER RYE HIGHLIGHTED GREEN WITHIN KILDARE COUNTY COUNCIL JURISDICTION ARE SUBJECT TO SEPARATE APPLICATION TO KILDARE COUNTY COUNCIL

DESIGN ROUTE OF IW RISING MAIN (MAGENTA)

**DRAWING 0503**

**LEGEND:**

SITE BOUNDARY (CO. MEATH)	
WORKS WITHIN CO. KILDARE	
MASTER PLAN BOUNDARY	
TWIN HDPE RISING MAIN	
UPVC S8B WASTEWATER DRAINAGE OR SIMILAR APPROVED	
1200mmØ WASTEWATER DRAINAGE PRECAST CONCRETE MANHOLE OR SIMILAR APPROVED	
UPVC TWINWALL SURFACE WATER DRAINAGE OR SIMILAR APPROVED	
1200mmØ SURFACE WATER DRAINAGE PRECAST CONCRETE MANHOLE	
900mm WIDE FILTER DRAIN	
POLY TUNNEL ATTENUATION SYSTEM	
PERVIOUS PAVING (POROUS ASPHALT, OR SIMILAR APPROVED)	
450mm INSPECTION CHAMBER	
TRAPPED ROAD GULLY	
150mmØ GULLY CONNECTION	

- GENERAL NOTES:**
- ALL NOTED LEVELS ARE TO ORDNANCE DATUM, MALIN HEAD.
  - REFER TO ARCHITECT'S LAYOUT FOR ALL SET-OUT INFORMATION.
  - REFER TO ARCHITECT / LANDSCAPE ARCHITECT'S DESIGN DRAWINGS FOR DETAILS OF PROPOSED SURFACE FINISHES AND LANDSCAPING.
  - REFER TO ARCHITECT DRAWINGS FOR DETAILS OF PRIVATE DRAINAGE.
  - ALL SURFACE WATER DRAINAGE IS TO BE INSTALLED IN ACCORDANCE WITH THE GREATER DUBLIN REGION CODE OF PRACTICE FOR DRAINAGE WORKS, THE BUILDING REGULATIONS PART H AND THE SITE DEVELOPMENT SPECIFICATION.
  - ALL CAR PARK DRAINAGE IS TO BE INSTALLED IN ACCORDANCE WITH THE GREATER DUBLIN REGION CODE OF PRACTICE FOR DRAINAGE WORKS, THE BUILDING REGULATIONS PART H AND THE SITE DEVELOPMENT SPECIFICATION.
  - ALL WASTEWATER DRAINAGE IS TO BE INSTALLED IN ACCORDANCE WITH THE IRISH WATER CODE OF PRACTICE FOR WASTEWATER INFRASTRUCTURE (REVISION 2 - JULY 2020), THE BUILDING REGULATIONS PART H AND THE SITE DEVELOPMENT SPECIFICATION.
  - ALL DRAINAGE COVER LEVELS ARE TO BE COORDINATED WITH PROPOSED ROAD DESIGN LEVELS AND ARCHITECT/LANDSCAPE ARCHITECT'S PROPOSED FINISH LEVELS.
  - ALL BASEMENT CHAMBER COVERS TO BE DOUBLE SEALED, AND CLASSIFICATION D400 LOADING WHERE LOCATED IN VEHICULAR AREAS.
  - ALL CONNECTIONS TO NEW DRAINAGE NETWORKS ARE TO BE MADE AT AN ANGLE OF 90° OR IN THE DIRECTION OF FLOW.
  - REFER TO ARCHITECT AND M&E ENGINEERING DESIGN DRAWINGS FOR CONFIRMATION OF LOCATION AND SPECIFICATION OF FLOOR GULLIES.
  - REFER TO M&E ENGINEERING DESIGN FOR CONFIRMATION OF WASTE AND SANITARY POP-UP/OUTLET LOCATIONS.
  - THE CONTRACTOR IS TO VERIFY INVERT LEVEL AT PROPOSED CONNECTION TO EXISTING SEWERS, PRIOR TO ANY OTHER WORKS BEING CARRIED OUT, AND MAKE ANY DISCREPANCIES KNOWN TO THE ENGINEER.
  - THE CONTRACTOR IS RESPONSIBLE FOR CONFIRMATION OF PRESENCE ALL EXISTING UTILITIES, IF ANY, ALONG ROUTE OF PROPOSED DRAINAGE NETWORKS - BY INTRUSIVE INVESTIGATION OR EQUAL.
  - EXISTING PUBLIC SEWER TO BE JET CLEANED AND CCTV SURVEYED PRIOR TO, AND AFTER PROPOSED CONNECTIONS FROM NEW NETWORK.
  - ALL NEW DRAINAGE INFRASTRUCTURE TO BE JET CLEANED AND CCTV SURVEYED, WITH ANY NOTED DEFECTS REMEDIATED, ON COMPLETION OF WORKS, TO THE SATISFACTION OF THE LOCAL AUTHORITY.

**PLANNING DRAWING.**  
**NOT FOR CONSTRUCTION.**  
 ALL LEVELS GIVEN ARE  
 RELATIVE TO ORDNANCE DATUM.  
 THIS DRAWING HAS BEEN ISSUED FOR INFORMATION  
 PURPOSES ONLY AND MUST NOT BE USED  
 FOR CONSTRUCTION UNDER ANY CIRCUMSTANCES

Rev No.	Date	Revision Note	Drn by	Chkd by
P01	09/12/22	SUITABLE FOR INFORMATIION	RM	SMG
P02	31/03/22	SUITABLE FOR INFORMATION	RM	MK
P03	28/04/22	SUITABLE FOR PLANNING	EH	MK
P04	29/07/22	SUITABLE FOR INFORMATION	EH	MK
P05	25.08.22	SUITABLE FOR PLANNING	EH	MK

• FOR SETTING OUT REFER TO ARCHITECT'S DRAWINGS.  
 • THIS DRAWING TO BE READ IN CONJUNCTION WITH ALL OTHER ARCHITECTURAL AND ENGINEERING DRAWINGS AND ALL OTHER RELEVANT DRAWINGS AND SPECIFICATIONS.  
 • DO NOT SCALE DRAWING. USE FIGURED DIMENSIONS ONLY.  
 • NO PART OF THIS DOCUMENT MAY BE REPRODUCED OR TRANSMITTED IN ANY FORM OR STORED IN ANY RETRIEVAL SYSTEM OF ANY NATURE WITHOUT THE WRITTEN PERMISSION OF O'CONNOR SUTTON CRONIN AS COPYRIGHT HOLDER EXCEPT AS AGREED AND IFC ON THE PROJECT END

Head Office,  
 9 Prussia Street,  
 Dublin 7,  
 D07 K157

TEL +353 (0)1 8682000

e: [contactus@ocsc.ie](mailto:contactus@ocsc.ie)  
 w: [www.ocsc.ie](http://www.ocsc.ie)

**OCSC**  
 O'CONNOR | SUTTON | CRONIN  
 Multi-disciplinary  
 Consulting Engineers

Client: **SKY CASTLE LTD**  
 Project: **PRIMARY CARE CENTRE & NURSING HOME**

Title: **PROPOSED DRAINAGE NETWORKS LAYOUT MASTERPLAN**

Code	Originator	Zone	Level	Type	Role	Number	Status	Revision
S665	OCSC	1B	MH	DR	C	0500	S4	P05